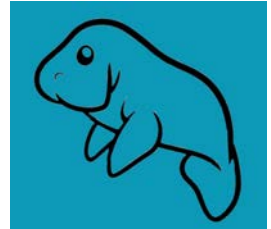


KS3 Geography
Russia



NAME

Suggested Time: 1 hour

Please complete all questions in this paper to the best of your ability.

You should spend no more than 1 hour completing this paper.

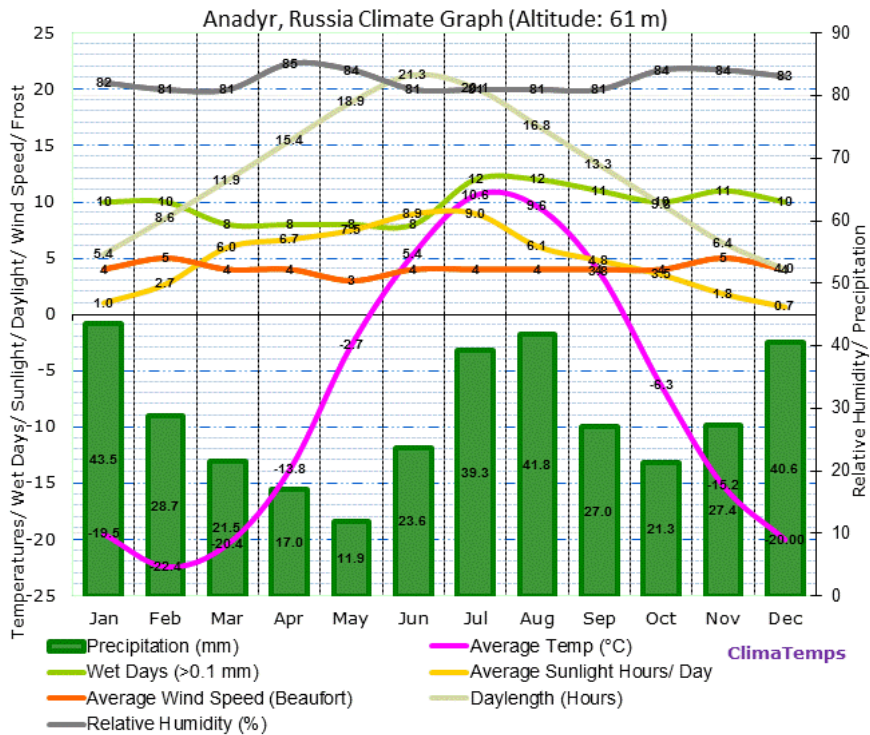
Use the marks shown after each question ([x]) to give you an idea of how much to write for each answer. 1-mark answers do not need any explanation or much detail whereas higher-marked questions require a higher amount of detail.

When asked to **explain**, aim to make a point or suggest an idea and then explain what that means or *why* it is a good point, in detail.

When you have completed the assessment you can use the mark scheme (sent with this paper) to find your KS3 level. Alternatively, you can answer the paper and then either scan or photo the pages and send them to me for marking at humanateestutor@gmail.com.

The deadline for submission of this assessment is **Friday 17th December** and I'll be marking the papers and returning them on the 18th December.

1. A climate graph for Anadyr, the most easterly Russian town.



(a) What is the average temperature in February?

..... [1]

(b) What is the average rainfall in August?

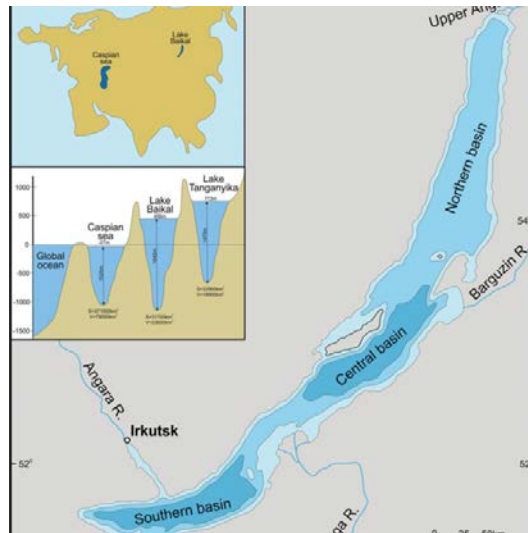
..... [1]

(c) What is the difference in average rainfall AND wet days between February and July?

.....
 [2]

[Total: 4]

2. A map of Lake Baikal.



(a) Name one river that feeds Lake Baikal.

..... [1]

(b) Lake Baikal is home to freshwater seals. Explain how they have adapted to survive in the cold, deep lake.

.....
.....
.....
.....
.....
.....
.....
.....
.....
..... [4]

[Total: 5]

3. A photograph of people in Kalmykia.



(a) What is the predominant religion in Kalmykia?

..... [1]

(b) Kalmykia is experiencing desertification. Explain what this is and why it is happening.

.....
.....
.....
.....
.....
.....
.....
.....
..... [4]

[Total: 5]

